



SkyElite

User's Manual

Version 1.3 – Revised October 12, 2021

www.4FlightSims.com

support@4FlightSims.com



Table of Contents

Please read SkyElite v1.3 Changes.pdf for latest changes information and updating!

Contents

Table of Contents	2
About SkyElite	3
Home cockpit setup examples using SkyElite.....	4
Installing and Executing SkyElite	5
Using SkyElite	6
PFD Modes	7
Menus and Softkeys	8
SkyElite Function Mode	12
PFD	13
PFD - SE1000 mode.....	14
Virtual Keyboard	15
MAP	16
Map Point Tracking (MPT).....	18
Airports	19
Airport Document Manager.....	20
Flight Plan and route map.....	21
Aircraft menu.....	22
Menu (additional options).....	23
Settings	24
Music	27
Compatibility and known limitations	28
Contact us.....	29
Release Changes.....	30



About SkyElite

SkyElite is a web-based EFIS PFD system specially designed to provide an enhanced experience of the Flight Simulation world.

SkyElite is an external app totally independent of the aircraft instruments. It is not intended to be a remote control for existing G1000 or similar EFIS in the aircraft. It works independently but connected to the aircraft flight systems: autopilot, radio, fuel, engines, navigation, lights and much more.

It can be executed on additional monitors, laptop computers, iPad and Android tablets. It works in iPhone and Smartphones too, but is not recommended due the small screen size.

Flight Simulator pilots will easily emulate a glass-cockpit-style at home, all you need is one or more devices with a compatible web browser. Multiple devices can be used simultaneously, and PFD can be used as MFD with the full map feature.

SkyElite is easy to scale by using one or more devices to display the PFD, MFD, moving map, aircraft controls, light switches, flight plan information, route map and much more, and is the most flexible, easy and cheap way to build your home cockpit.

Specifically designed for virtual pilots willing to take full advantage of all the simulator features in real time, pilots will enjoy this software to maximize their potential when flying and increasing their skills by learning how to get the full power available in the Flight Simulator.

SkyElite uses SimConnect, the standard interface provided by Microsoft to connect to the simulator. Aircraft using SimConnect standard functions will work perfectly with SkyElite.

You can try a fully-functional demo evaluation version of SkyElite for free with flight time limitation only.

Please, read carefully "*SkyElite DEMO Instructions.pdf*" document and be aware that the demo version is for evaluation purposes only.

We strongly recommend that you install and test the demo version of SkyElite for free and test it with your preferred aircraft before purchasing it. A major number of planes will be compatible with SkyElite, and by trying the demo you will have the chance to test this in advance.

Home cockpit setup examples using SkyElite

SkyElite is designed to be flexible and fit everyone's budget. Any reasonable modern device with a web browser can be a part of this EFIS, totally independent of the original aircraft instrument set.

Simple android tablet and smartphone



Mac, iPad and android tablet



GA glass cockpit using touch screens



Installing and Executing SkyElite

Important: Please read document [SkyElite Installation Manual.pdf](#) first!



This manual describes SkyElite proprietary features and functions. This is not a tutorial of the standard procedures or how to use an autopilot, PFD or MFD. No aircraft standard instrumentation is explained in this manual.

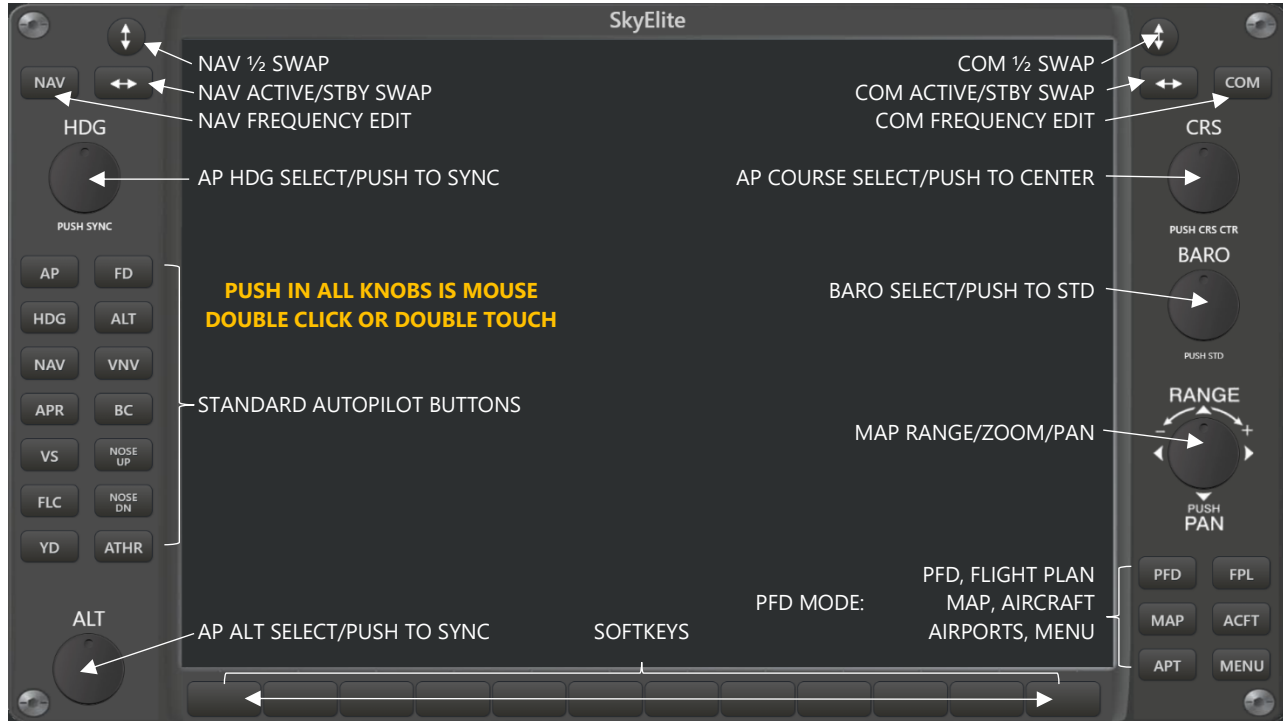
SkyElite manual assumes that users already have a knowledge of the aircraft standard instruments functionality: autopilot, GPS and navigation, radio, engines, electrical, ILS procedures, etc.

This manual simply overviews how to perform all above standard functions and procedures by using SkyElite, but does not go deeper in any instrument specific training.

New or non-experienced flight simulator users, should read other flight simulator instrumentation tutorials or manuals before using SkyElite.

Using SkyElite

The PFD will be the first screen visible in your browser when SkyElite is accessed and it will be off (inactive) unless a flight is started in the simulator. This is the PFD layout description:



The above buttons and knobs are present and active in all PFD modes.

SkyElite main modes: PFD and MAP (MFD)



There is no real MFD in SkyElite but when PFD is set to MAP mode, it looks like a MFD. When SkyElite is used in two simultaneous screens, tablets or iPads, the use of MAP as PFD is highly recommended.

PFD Modes

PFD has six menus, available by pressing the buttons on the bottom right side of the screen:

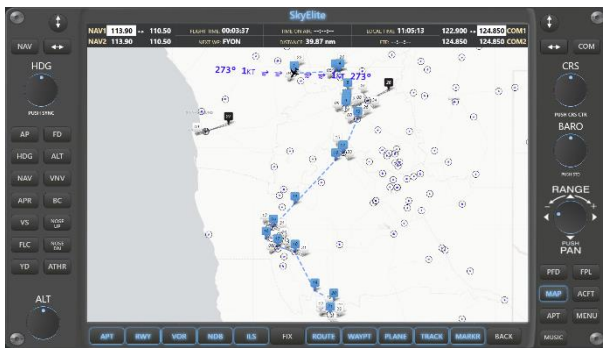
PFD



FPL

#	T	Ident	Name	Alt	Hdg	Leg	Dist	ETE
1	APT	FYOT	Kansimba L...	4111	226	0.00	0.27	00:00:00
2	APT	FYON	Okahandja ...	5500	101	40.05	39.89	00:00:00
3	POS	WP1		5500	101	3.09	42.98	00:00:00
4	POS	WP2		5500	100	1.20	44.15	00:00:00
5	POS	WP3		5500	121	20.10	54.40	00:00:00
6	POS	WP4		5500	131	10.88	58.10	00:00:00
7	POS	WPS		5500	133	2.36	58.65	00:00:00
8	POS	WPG		5500	135	1.84	59.45	00:00:00
9	APT	FYWE	Eros	5500	137	2.52	60.37	00:00:00
10	APT	FYWC	Windhoek ...	5500	139	15.33	75.60	00:00:00
11	APT	FYRS	Rehoboth ...	5500	161	34.84	89.88	00:00:00
12	POS	WPT		5500	162	1.32	89.98	00:00:00
13	POS	WPB		5500	167	9.30	92.87	00:00:00
14	POS	WPP		5500	193	57.16	125.40	00:00:00
15	APT	FYMN	Sossusvlei I.	5500	201	29.81	148.46	00:00:00

MAP



AIRCRAFT [ACFT] – SOFTKEYS ONLY



AIRPORTS [APT]

ICAO	Name	Country	Elev	Dat	Run(f)	Run(m)	Surface	ILS	Light
FYOT	Kansimba Landing Site	Namibia	4110	0	3526.9	1075	Dirt		
FYMG	Midgard Airport	Namibia	5091	2	6522.31	1988	Dirt		
FYON	Okahandja Airstrip	Namibia	4327	2	3789.37	1155	Asphalt		
FYSN	Osona Airstrip	Namibia	4455	4	6066.55	1850	Dirt		
FYOD	Onjossa Airport	Namibia	4051	8	4350.39	1326	Dirt		
FYKA	Karibib	Namibia	3822	12	8385.83	2556	Asphalt		
FYUA	Farm Dawib Ost Landing Strip	Namibia	3503	16	3192.26	973	Dirt		
FYAR	Arandis	Namibia	1863	26	6279.53	1914	Asphalt		
FYOZ	Onduruqa Lodge Airport	Namibia	4107	26	4603.02	1403			
FYWH	Hosea Kutako Intl	Namibia	5567	26	15003.28	4573	Asphalt		
FYWE	Eros	Namibia	5554	34	7198.16	2194	Asphalt		
FYOM	Omanuru Airport	Namibia	3996	38	9242.78	1598	Dirt		

MENU – SOFTKEYS ONLY




Menus and Softkeys

PFD	Sets main PFD mode	
	INMAP	Toggles PFD inset map
	TRMAP	Toggles PFD transparent background map
	TR1-TR9	Set background map opacity from 1 to 9
	BACK	Goes back to the previous menu
	WIND	Toggles PFD wind data widget
	REFSPF	Toggles PFD reference speeds widget
NEW!	SE1000	Toggles PFD SE1000 AHRS mode
	CDIINF	Toggles top status box CDI information: GPS/NAV1/NAV2/MPT
	CDI	Toggles CDI mode: GPS/NAV1/NAV2
	ADF	Enters ADF menu
	STBSET	Edits ADF STBY Frequency
	<->	Swaps ADF Active / STBY Frequencies
	BEARNG	Shows ADF bearing in the HSI if AFD signal and not in GPS mode
	HDGSET	Sets ADF bearing in the AP selected heading
	ADFINF	Toggles PDF ADF information widget
	BACK	Goes back to the previous menu
	ELEVAT	Toggles PFD elevation chart widget
	ENGINE	Toggles PFD engine values widget
	CTRLS	Toggles PFD flight controls widget
	INFO	Toggles PFD information widget
MAP	Sets MAP mode (MFD)	
	MAPSR	Enters the map source selector
	DEFLT...	Shows 11 different map sources
	BACK	Goes back to the previous menu
	CLEAR	Clears plane tracking and resets map to default
	DATA	Enters the map data selector
	APT	Toggles map to show Airport markers
	RWY	Toggles map to show Runway markers
	VOR	Toggles map to show VOR markers
	NDB	Toggles map to show NDB markers
	ILS	Toggles map to show ILS markers
	FIX	Toggles map to show Fixes markers
	ROUTE	Toggles map to show Flight Plan Route information
	WAYPT	Toggles map to show Route Waypoint markers
	PLANE	Toggles map to show Plane marker

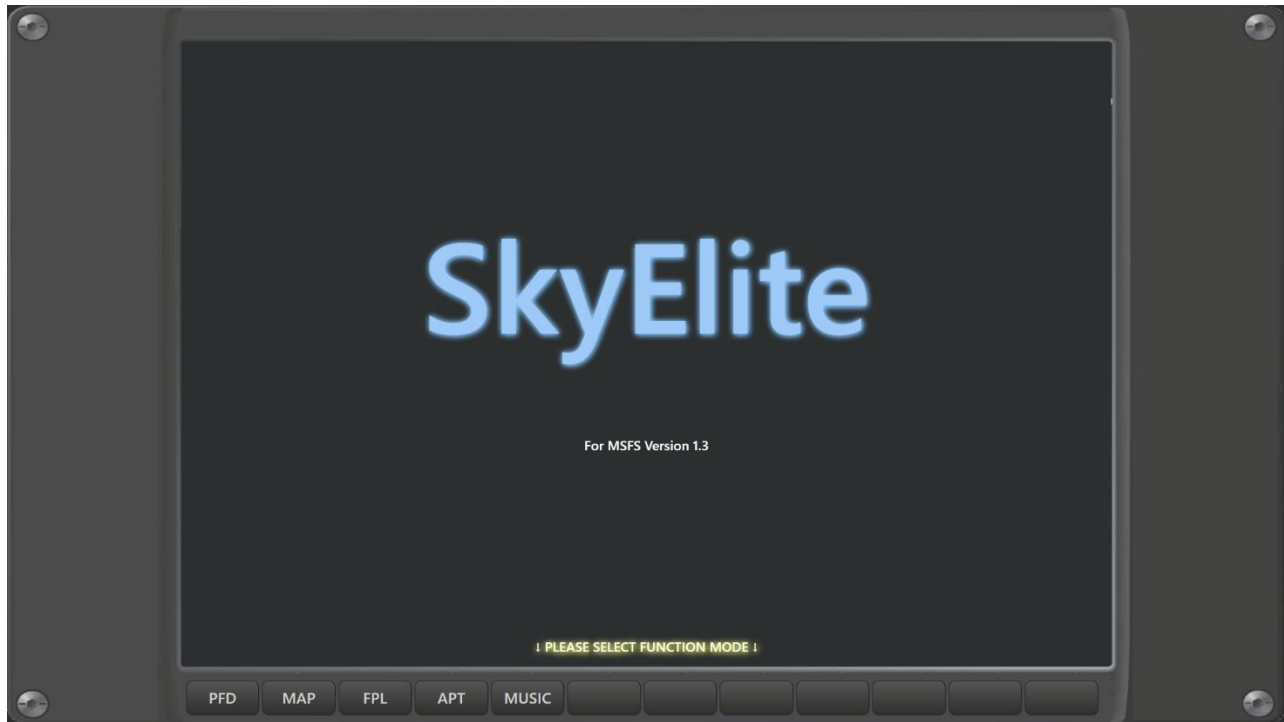
	TRACK	Toggles map to show Plane tracking
	MARKR	Toggles map to show runway and ILS markers
	BACK	Goes back to the previous menu
	PLNEUP	Toggles plane in map points always up
	CENTR	Toggles plane always in center of the map
	CDIINF	Toggles top status box CDI information: GPS/NAV1/NAV2
	MPT	Toggles MPT. See MPT section for more information.
	STATUS	Toggles map top status box
	ELEVAT	Toggles map elevation chart
	MPWIN	Toggles map wind indicator
	LAND	Toggles landing map mode (zoom). See related map settings.
	SHDOW	Toggles map plane shadow. Use this option according to the map source.
APT	Sets AIRPORT MODE (explained later in the manual)	
	NEAR	Shows only nearest airports
	W-ILS	Shows only nearest airports with ILS
	LIGHT	Shows only nearest airports with lighting
	FPLAPT	Shows only airports present in the flight plan
	APTDOC	Shows airport document manager screen
	ONMAP	Shows selected airport in the map
MUSIC	Shows in-flight music options	
	MUTE	Mute/Pause the music
	PLAY	Plays selected station or mp3 file
	STOP	Stops the music
	NEXT	Go to the next mp3 file when playing mp3
FPL	Sets Flight Plan mode	
	WPMAP	Shows selected waypoint in the map
	SETALT	Sets selected waypoint altitude as AP selected altitude
	SETALV	Sets selected waypoint altitude as AP selected altitude and toggles VS
	SETHDG	Sets selected waypoint heading as AP selected heading
	BGMAP	Shows transparent background map behind flight plan
	DELETE	Deletes current flight plan from the GPS and MAP
	APTINF	Shows selected waypoint airport information, if it is an airport.
ACFT	Sets Aircraft functions in softkey menu	
	LIGHTS	Enters lights menu – See lights section for more information
	LAND	Toggles landing light
	TAXI	Toggles taxi light

	RECOG	Toggles recognition light
	NAV	Toggles NAV light
	BCN	Toggles beacon light
	STROBE	Toggles strobe light
	LOGO	Toggles logo light
	WING	Toggles wings light
	PANEL	Toggles panel light
	CABIN	Toggles cabin light
	ALL	Toggles all lights
	BACK	Goes back to the previous menu
	FUEL	Enters in fuel menu
	+25%	Adds 25% of fuel
	FULL	Fill the tanks completely
	LEFT	Selects left tank
	CENTER	Selects center tank
	RIGHT	Selects right tank
	ALLTNK	Selects all tanks
	OFF	Turns fuel selector off
	BACK	Goes back to the previous menu
	CONTRL	Enters flight controls menu
	LG-UP	Landing gear up
	LG-DN	Landing gear down
	FL-UP	Flaps up (Decrements)
	FL-DN	Flaps down (Increments)
	SPOILR	Toggles spoiler / air brake
	PBRAKE	Toggles parking brake
	BACK	Goes back to the previous menu
	TRIMS	Enters trim controls menu
	ELECTR	Elevator center position
	AILCTR	Ailerons center position
	RUDCTR	Rudder center position
	ELV-UP	Elevator trim up
	ELV-DN	Elevator trim down
	AIL-L	Aileron trim left
	AIL-R	Aileron trim right
	RUD-L	Rudder trim left
	RUD-R	Rudder trim right
	BACK	Goes back to the previous menu
	ASKID	Toggles anti-skid brake
	PITOT	Toggles pitot heat

	ANTICE	Toggles anti-ice systems
	STRSTP	Engine Start/Stop
	BATT	Battery On/Off
	BACK	Goes back to the previous menu
	MENU	Sets menu options softkey menu
	ON/OFF	Toggles PDF on/off
	TIME	Enters SIM time menu
	HOUR+	Increments SIM time by 1 hour
	HOUR-	Decrements SIM time by 1 hour
	MIN+	Increments SIM time by 1 minute
	MIN-	Decrements SIM time by 1 minute
	NOW	Sets SIM time to current
	BACK	Goes back to the previous menu
	PAUON	Turns SIM pause ON – Not compatible with Active Pause
	PAUOFF	Turns SIM pause OFF – Not compatible with Active Pause
NEW!	GREENG	Toggles AHRS ground color between green and brown
	GRDSRV	Enters in ground services menu
	PUSHBK	Toggles pushback
	/	Sets pushback direction to left
	 	Sets pushback direction straight
	\	Sets pushback direction to right
	RQFUEL	Request fuel services (Fuel truck animation)
	JETWAY	Toggles Jetway (Jetway animation on airport gates)
	BACK	Goes back to the previous menu
	FSCR	Request browser to be in full screen mode
	RESET	Resets PFD back to initial state
		Show settings menu
	ABOUT	Shows SkyElite version and license information
	ELVDAT	Provides information and help to install elevation data
NEW!	REFSPD	Shows the reference speed editor
NEW!	SE1000	Shows the SE1000 mode configuration
	BACK	Goes back to the previous menu
	BACK	Goes back to the previous menu

SkyElite Function Mode

The SkyElite function mode selector:



When SkyElite is started, different profiles for different functions modes will be selectable.

Current profile list matches with all the PFD menu functions. After selecting a profile, SkyElite will start the PFD in this function mode, and all subsequent setting made to the screen configuration will be saved for the selected profile and used it later in future sessions. This way, all the screen configurations will stay persistent, and profile depending.

Users can create desktop shortcuts pointing directly to a profile.

Profile data is stored in your SkyElite\Data subfolder. Never forget to backup this folder to keep your profile information safe.

To see the profile selector, be sure to access to <http://localhost:7667> address or http://ip_address:7667 – Any other address will lead you to the PDF directly.

Profiles store your screen layout configuration only. Instruments, aircraft controls and switch status are not stored in profile settings.

PFD

SkyElite PFD contains a set of standard instruments in any standard PFD:

- Attitude and Heading Reference System (AHRS)
- HSI
- Turn Rate Indicator
- Air Speed and Vertical Speed
- Altimeter
- Barometer
- CDI
- Inset Map
- Autopilot selected bugs
- Reference speeds
- Wind data
- COM and NAV frequencies
- Engine indicators
- Flight Controls indicators
- Flight information and status box
- Elevation chart

The PFD contains a set of buttons and knobs to be used on touch screens or with the mouse pointer. Some values can be entered by using the built-in virtual keyboard, by clicking or touching in related screen areas. Virtual keyboard editable values are:

- COM frequencies.
- NAV frequencies.
- ADF frequencies.
- Autopilot selected IAS/FLC
- Autopilot selected HDG
- Autopilot selected CRS
- Autopilot selected altitude
- Autopilot selected VS

Most of the above values can be also changed by the mouse wheel, up and down, for example the barometer by pointing the mouse over it and moving the mouse wheel.

The PDF widgets and components on the screen can be hidden and shown using the softkeys.

Read all [softkey definitions for PFD](#) in the Menus and Softkeys section of this manual for additional details.

PFD - SE1000 mode

SkyElite SE1000 AHRS mode look by pressing the SE1000 softkey in the PFD:



This new look mimics the glass cockpit standards in altitude and airspeed instruments.

The airspeed indicator shows alerts and color ranges based on reference speeds. Users can now also edit reference speeds, but this feature will only affect to SkyElite functions.

The altitude indicator also shows alerts and color ranges based on the elevation.

Both selected altitude and selected airspeed are indicated on the instruments.

Selected altitude will flash an alert when reaching the target altitude.

EFIS ground color could be switched from brown to green by the GREENG button inside the MENU option.

ADF and Engine indicator locations are changed to fit in SE1000 mode.

Virtual Keyboard

There are clickable/touchable areas of the PDF to invoke the virtual keyboard and change values, some examples are:

Autopilot selected Altitude



Autopilot selected VS



Autopilot selected heading



Autopilot selected course



NAV Frequency

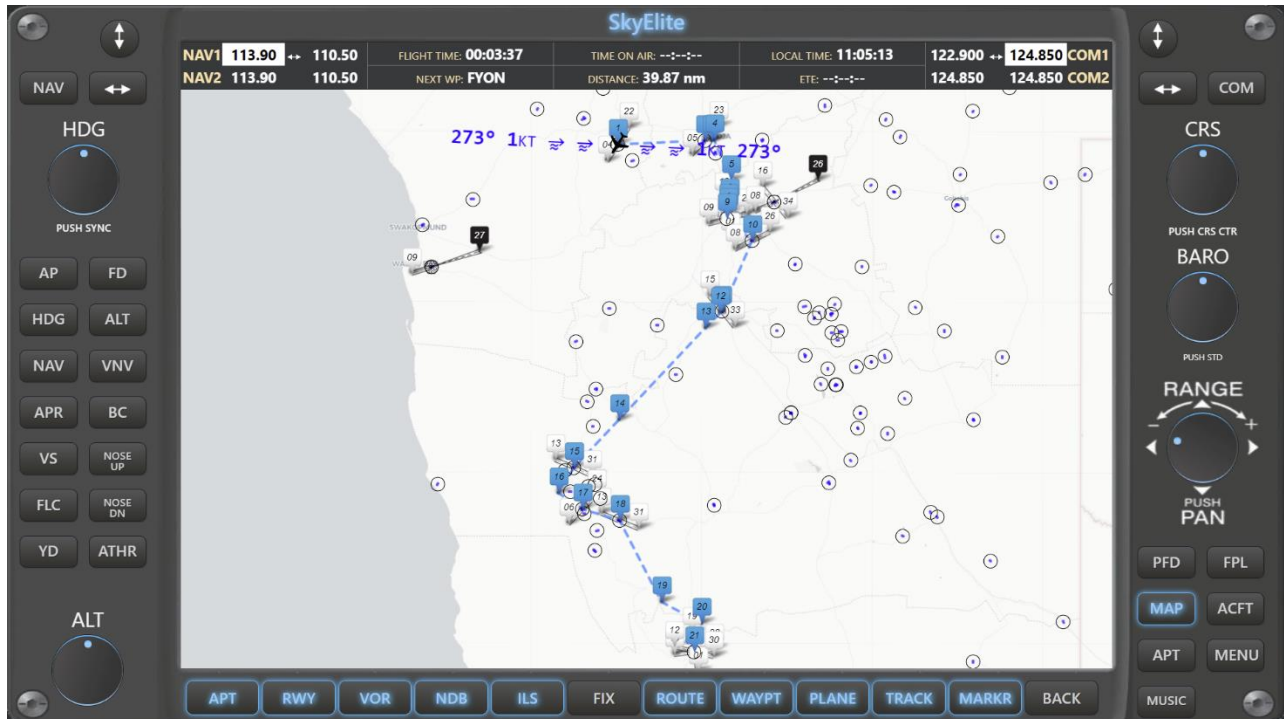


COM Frequency



From version 1.2, Barometer value can be entered by virtual keyboard, by clicking or touching on it.

MAP



SkyElite MAP mode (MFD mode) shows a full moving map feature with icons and markers for airports, runways, VOR, NDB, ILS, Fixes and other indicators and popup menus for different functions.

Users can select different map sources in SkyElite by clicking on the MAPSR softkey.

No ILS or RWY data is shown by default unless clicked in the airport market. ILS and RWY buttons will affect clicked airports only.

Copyrights and attributions are shown in the bottom-right side of the map according to each map provider license documentation.

The map is movable and zoomable using mouse and mouse wheel, fingers on touch screen, iPads or tablets and by using the range knob on the SkyElite bezel.

Important: SkyElite uses free map source services under Creative Commons Attribution or similar licenses. WE ARE NOT RESPONSIBLE for the map servers provided in SkyElite "As Is" and "As Available". Out of our control, map server providers can interrupt, suspend or terminate their services.

Read all [softkey definitions for map function](#) in the Menus and Softkeys section of this manual for a detailed list of options for maps.

There are different kinds of interactive icons and markers for many purposes. The most important icon functions, but not limited to, are enumerated in next table:

Icon Type	Description and function by clicking on it
Airport	Shows airport information summary. Click INFO for more information or MPT for Map-point-tracking feature (see MPT section). Click on Airport icon to show runway markers.
Runway marker	Shows runway related information and, when available, buttons to autodial ILS frequencies. MPT feature also available on runway markers.
VOR marker	Shows VOR related information and buttons to autodial VOR frequencies. MPT feature also available on VOR markers.
NDB marker	Shows ADF related information and buttons to autodial ADF frequencies. MPT feature also available on NDB markers.
FIX	No interactive function for fixes.
Route	Shows all the waypoint and route track when a flight plan is loaded
Waypoint markers	Shows runway related information

The different icons, markers and other map objects visibility can be toggled by the DATA menu option of the map.

The map provides two kinds of orientations, map north up or plane always up, as well as keep the plane icon always centered in map, by using "PLNEUP" and "CENTR" map softkeys.

By double-clicking or double-touching the RANGE knob, the map can be centered and the follow plane mode is restored.

There are softkeys to toggle visibility for status box, elevation chart, map wind indicator and plane shadow.

MPT softkey toggles the Map-point-track function, and is explained in the MPT section of this manual.

LAND softkey toggles Map landed mode, which is basically a deeper zoom into the airport to see the airport map when the plane is landed. This function is also performed automatically on ground touch and configurable by the settings menu.

Double-click or double-touch in any area of the map centers the plane on map and recovers follow plane function

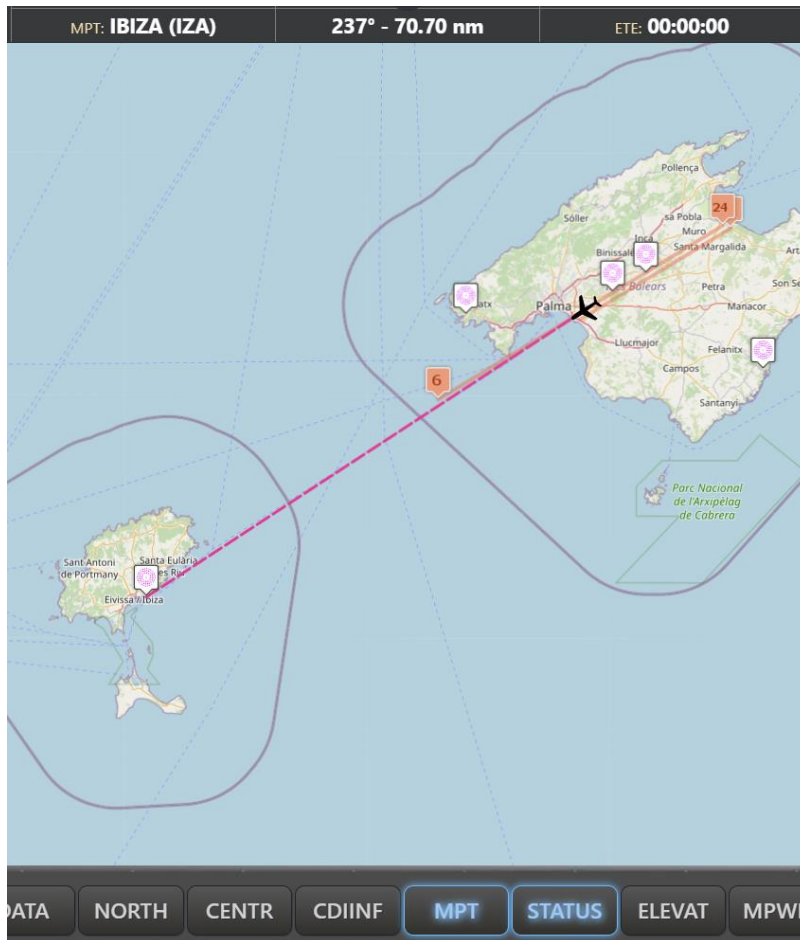
All the configurations selected in this map will affect the inset map of the PFD.

Map Point Tracking (MPT)

SkyElite provides a proprietary navigation function: Map Point Tracking or MPT

This function is very useful for flight navigation when there is no VOR/DME or NDB available for a specific flight.

Most of the map icons and markers show the MPT button in their popups when clicked. By pressing MPT in an icon or marker the upper status box will show distance, heading and estimated time in flight to that specific point. MPT information has to be selected by the [CDIINF softkey of the map](#) or the PFD.



MPT map softkey toggles this feature on and off.

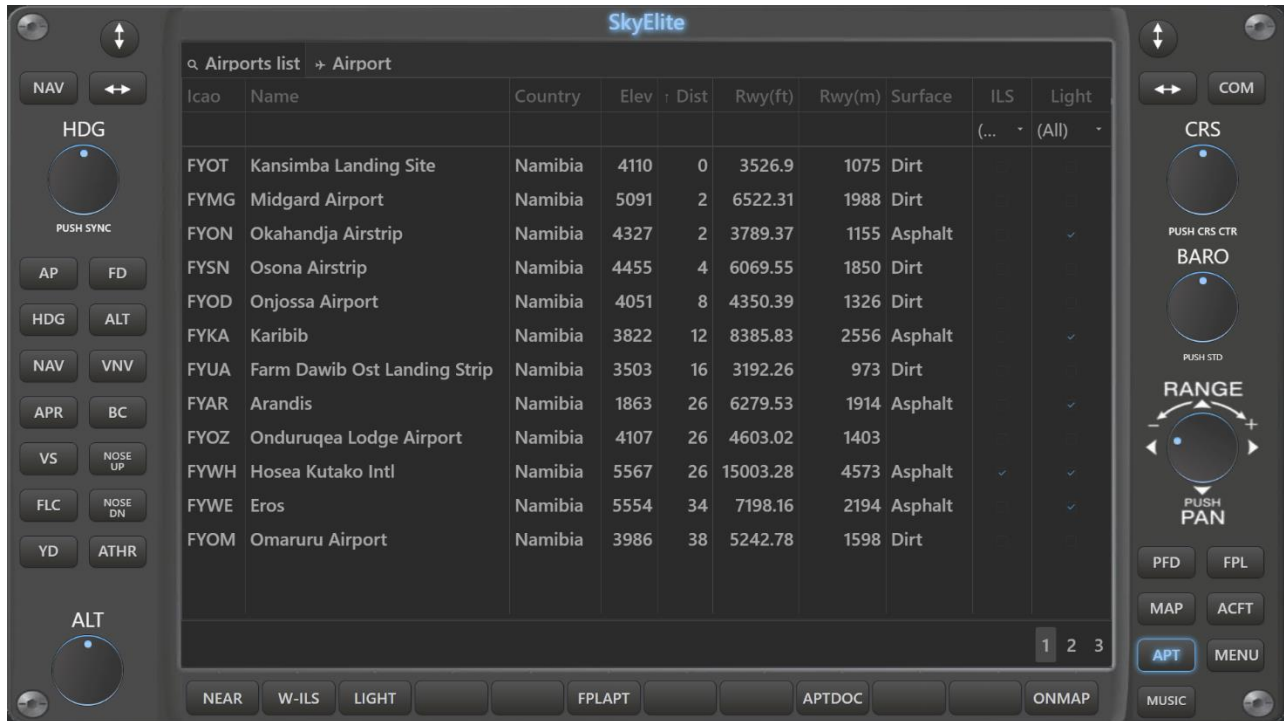
Users can keep changing the selected MPT point by subsequently clicking on other elements of the map.

This is a useful way to measure distance, time and heading for VFR flights.

MPT function will not work if a flight plan or GPS is activated.

Use this function for Direct To flight instead of the GPS when using SkyElite.

Airports



SkyElite APT menu provides an airport database tool.

Users can search and filter airports and see detailed airport information by double-clicking on an airport in the list.

The airport form contains different information groups for airport frequencies, runway information, ILS and VOR frequencies and real time weather.

All of the above information groups allow users to automate some flight tasks, for example frequencies autodial.

Airport information is also available and interactive in the map, by clicking on airport makers as well as ILS and runway markers.

NEAR, W-ILS, LIGHT functions sort the results by distance.

Read all [softkey definitions for APT](#) in the Menus and Softkeys section of this manual for additional details.

Airport Document Manager

After selecting an airport in the airport list, there is now a new softkey option: "APTDOC". This new softkey shows the document manager for selected airport.



Users can now upload (store) three kind of documents attached to selected airport: PDF documents like charts or other airport related information, flight plans in ".pln" file format and flight status stored in ".flt" format.

By uploading documents to an airport, they will be stored in specific SkyElite folders, and linked to that airport. Every time users' access to that airport, all the documents previously uploaded and stores will remain there.

Documents can be organized in folders, like in every file administrator. By default, SkyElite creates three base default folders.

By double-clicking or double-touching in a document this document is opened. PDF files are opened and shown inside SkyElite interface. Flight plans are activated in the GPS or ".flt" flight status are loaded. Depending on the kind of file, SkyElite is performing different functions.

PDF viewer allows page navigations, zoom functions and page rotation.

There could be limitations for all of the files, current known ones but not limited to, are:

- a. PDF viewer worked very well for all of tested documents and devices, but some PDF documents may not work properly, or this feature may not work on not standard devices.
- b. The flight plan file loading feature from SkyElite, as well as the ".flt" stored flight is in an experimental function stage. The MSFS SimConnect interface is still beta for this kind of functions. This is still an unstable feature until MSFS SDK is finished and improved.

This is a document viewer, not a chart service. Documents have to be obtained from other sources.

Flight Plan and route map



SkyElite FPL menu option shows flight plan information table detailed by waypoint.

This flight plan is loaded when a .pln file is loaded in the simulator or departure and arrival airports are selected in the simulator main menu. SkyElite has to be started before the flight plan is loaded and the flight is started in order to correctly receive the flight plan data.

Flight plans directly entered in the aircraft FMC or GPS device are not loaded in the current version of SkyElite due Microsoft SimConnect interface limitations.

When a flight plan is loaded, route and waypoint information is also graphically displayed in the map.

A transparent map background can be also set in the FPL menu.

Read all [softkey definitions for FPL](#) in the Menus and Softkeys section of this manual for additional details.

Important: All flight plan features included in SkyElite are subject to change according to the capabilities and limitations included in the Microsoft SimConnect interface.

Aircraft menu

The aircraft menu (ACFT button) contains a set of softkey functions and are independent of the PFD selected mode.

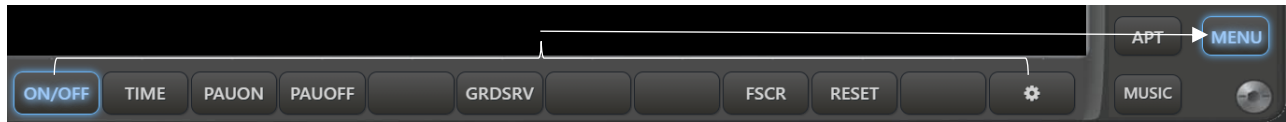


This menu provides capabilities to start/stop engines and battery, switch lights on/off, perform fuel operations, toggle some basic aircraft controls, adjust trims, and a few other functions.

The lights menu provides the basic and standard aircraft lighting switches provided by the simulator interface and may work totally or partially, depending on the selected aircraft.

Read all [softkey definitions for ACFT](#) in the Menus and Softkeys section of this manual for additional details.


Menu (additional options)



This menu shows a set of softkeys related to the simulator functions and SkyElite settings.

GRDSRV softkey give access to all the ground services functions



The SETTINGS menu  provides access to some SkyElite settings screens.



Read the [Settings section](#) on this manual for additional information.

Read all [softkey definitions for MENU](#) in the Menus and Softkeys section of this manual for additional details.

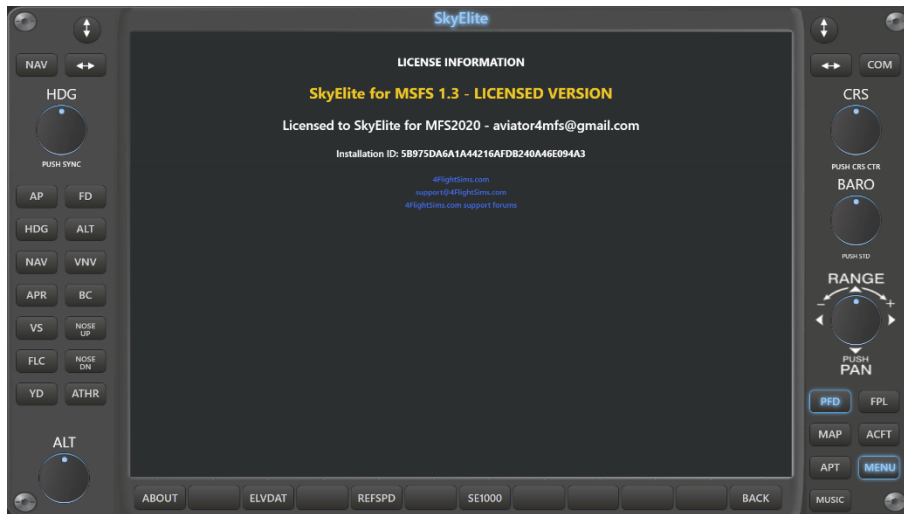
Settings



Use the Settings menu option to configure different SkyElite functions.

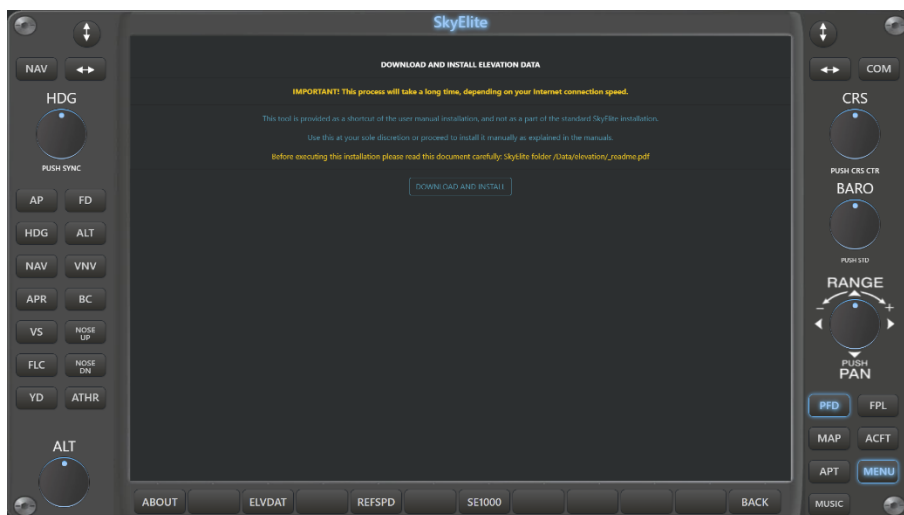


About screen



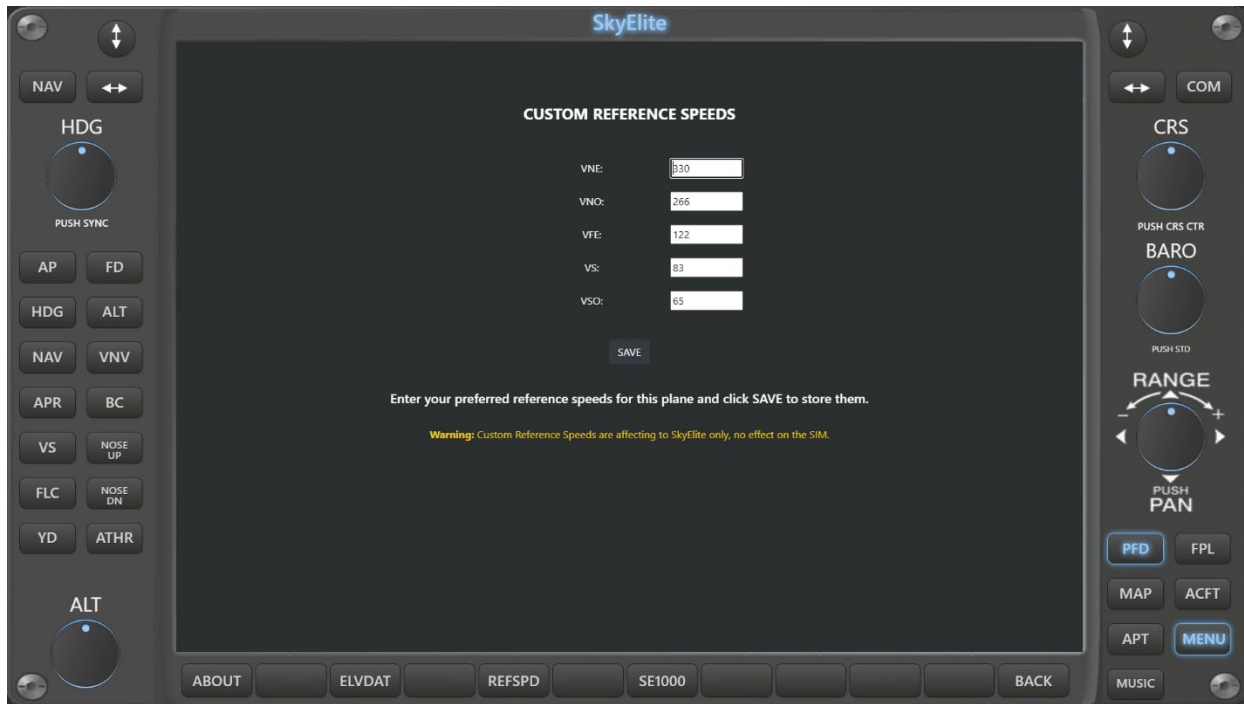
The About screen shows SkyElite version and license information

Elevation data



Elevation data screens shows information of how to install the Elevation database.

Reference Speeds

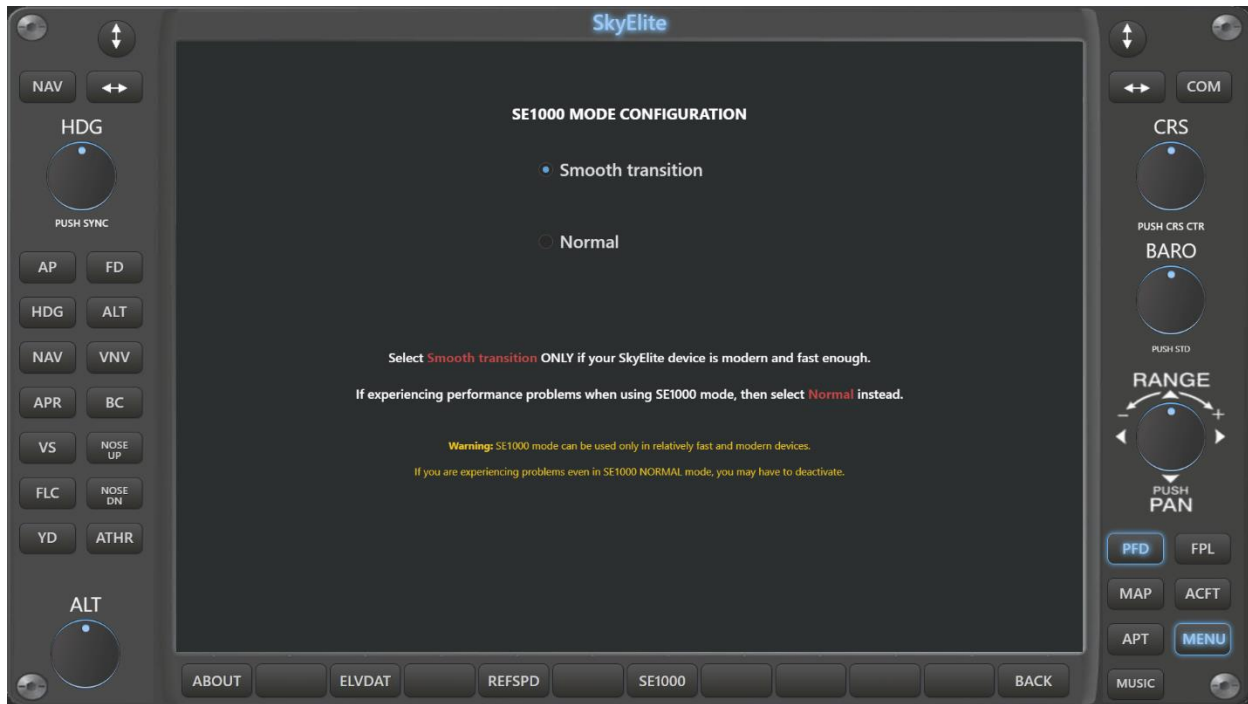


Use Reference Speeds screen to set your custom reference speeds for the current loaded aircraft.

Custom reference speeds defined on this screen overrides aircraft speeds definition and will affect only to the SkyElite indicators with no effect on the simulator or the aircraft panels at all.

There are some aircraft missing the "flight_model.cfg" file in the aircraft folder, and the reference speeds definition cannot be loaded, in those cases, users can define the reference speeds on this screen to use in SkyElite.

SE1000 Mode



The SE1000 Mode configuration screen allows users to set the graphical performance of the SE1000 altitude and speed instruments.

SE1000 mode consume lot of device resources and can be slow on older devices.

For fast and modern devices, the smooth transition option is recommended, instead, for older devices select normal transition mode.

If a device behaves slow and delayed even with the normal SE1000 transition mode selected, then SE1000 should be disabled and SkyElite should be used without tape-based altimeter and speed instruments.

Music

Use the Music menu option to select the Internet radio stations or mp3 files you want to listen to during your flight.



There is a dropdown list to select predefined radio stations, or you can enter your radio station URL on the right side if it's not in the list.

The radio station list can be updated using the file: SkyElite \Data\music.data. Please pay attention to the row format if you want to update this file.

Mp3 files should be located inside SkyElite \Data\music subfolder. You can create different music subfolders here to classify the music.

Use MUTE/PAUSE or STOP button to stop the music.

Music is played on the main computer where SkyElite is installed, not in the browser or remote device. The volume slider controls only the music volume, not the simulator sounds volume.

Use Microsoft Flight Simulator volume controls to set the simulator volume.

From version 1.2 it's possible to manage and create folders, upload or delete mp3 files directly from this music screen interface.

Softkey buttons from left to right: MUTE, PLAY, STOP, NEXT SONG.

The latest selected station and volume are stored in the selected profile, but selected station doesn't play automatically.

Compatibility and known limitations

There are some known limitations and compatibility issues to keep in mind when using SkyElite.

It's very important to know that current limitations don't affect at all the enjoyment of SkyElite in the Flight Simulator. In general, SkyElite will be very enjoyable to use in all planes, even in those not 100% compatible with SkyElite.

All of the features included in SkyElite, and their correct operation and functionality, are subject to and are affected by changes and maintenance made by Microsoft to the SimConnect Interface.

Current known and detected limitations:

- **Lighting:** SimConnect provides access to the standard light switches commonly found in GA aircraft. Airliners may not have all the light switches available and current ones will behave differently. Aircraft with custom lights or non standard ones may be affected too.
 - Recommendation: Switch all lights on using ALL button and then press all light switches one by one to see how lighting switches behave for a particular plane.

- **Autopilot:** Some known issues for light switches also apply to the Autopilot. SkyElite supports GA standard autopilot functions due the limitations of the SimConnect interface. Advanced MCP switches for airliners may not be accessible for SkyElite and current buttons may work partially or differently for complex autopilot configurations. Custom developed autopilots may act and behave differently when used from SkyElite.
 - Detected limitations:
 - Most of the detected problems are in Airliner compatibility. As an example, in the default A320, NAV function does not work, AP can't be disabled from SkyElite, and navigation is HDG.
 - Auto-throttle [ATHR]: Only available for some aircraft.
 - Flight Level Change [FLC]: Only available for some aircraft. And entering FLC bug using the virtual keyboard, UP and DOWN buttons for VS not affecting FLC in current version.
 - VNV: This button invokes SimConnect AUTOPILOT ATTITUDE HOLD event, and the behavior is not yet clear in the new Flight Simulator.

- **GPS:** SkyElite shows the Route and Flight plan in the map and detailed waypoint information in the FPL menu panel option. Currently, there are two main ways to show this information in SkyElite: Select flight departure and arrival in the simulator main menu, or load a ".pln" flight plan file made with an external application.

Flight plans or changes made directly in the aircraft cockpit GPS device or FMC, will have no effect in SkyElite. Waypoint destination changes or Direct To functions activated directly in the aircraft's GPS device will not be communicated to SkyElite, but always shows the original flight plan configuration.

We will keep improving all GPS, route and flight plan functionality as the SimConnect interface is improved by Microsoft and if new features are implemented.

- **Caution and Warning buttons:** SkyElite can't access the caution and warning buttons. Microsoft did not implement this function on the interface.
- **Chrono/Timer:** Chrono function is not accessible from SkyElite, as per the issue explained above.
- **Transponder:** We decided not to implement transponder settings in SkyElite, at this point, due to some limitations found. We will probably implement this feature in future versions.
- **Reference Speeds:** The reference speeds table on the PDF is only available in certain planes due the aircraft definition. We load this data from the plane configuration if available.

The limitations listed above, are current detected ones, but maybe not all, due the early development and recent release of the Microsoft Flight Simulator and the SimConnect interface.

Please, also read SkyElite Terms and Conditions for additional information and third-party dependencies.

Contact us...

If you have any questions or concerns about this product, please contact us at:

www.4FlightSims.com

support@4FlightSims.com



Release Changes

Please read SkyElite v1.3 Changes.pdf included in SkyElite installation folder.